

1/1.

1-3 9-3

2-1 10-2

3-1 11-2

4-4 12-4

5-2 13-2

6-1 14-4

7-4 15-4

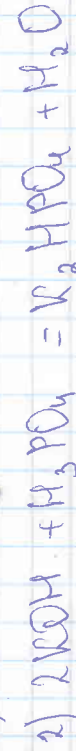
158

1/2.

$$1) V(H_3PO_4) = \frac{46 \text{ мм} \cdot 1,085 \frac{\text{г}}{\text{мл}} \cdot 0,176}{98 \frac{\text{г}}{\text{моль}}} \approx 0,09 \text{ моль}$$

$$2) V(KOH) = \frac{50 \cdot 1,2 \cdot 0,14}{56} = 0,15 \text{ моль}$$

$$3) V(H_3PO_4) : V(KOH) = 0,09 : 0,15 = 1 : 1,67$$



$$5) \text{ x моль } V(KOH) = V(H_3PO_4) = V(KH_2PO_4)$$

$$\text{ y моль } V(H_3PO_4) = V(K_2 HPO_4) \text{ и } 2y - \text{ моль}$$

$$e) \begin{cases} x+y=0,09 \\ x+2y=0,15 \end{cases}$$

$$x=0,03$$

$$y=0,06$$

$$V(KH_2PO_4) = 0,06 \text{ моль}$$

$$m(K_2 HPO_4) = 0,03$$

$$m(KH_2PO_4) = 4,08 \text{ г}$$

$$m(K_2 HPO_4) = 10,42 \text{ г}$$

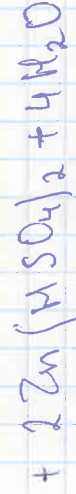
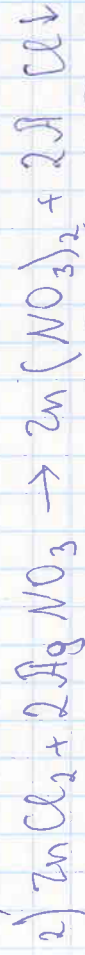
$$7) m \text{ p-pa} = 46 \cdot 1,085 + 50 \cdot 1,2 = 109,912$$

$$W(KH_2PO_4) = \frac{4,08}{109,91} = 4,04\%$$

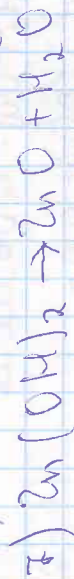
$$W(K_2 HPO_4) = 10,3\%$$

68

1/4

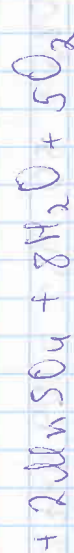
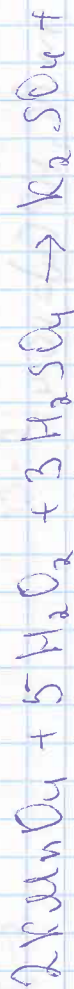


(F) Zn



85

$\frac{1}{3}$



30

325